
PENSACOLA POST

Society of American Military Engineers
Dedicated to the National Defense



APRIL 2006

PRESIDENT

CDR John D'Angelo, CEC, USN,
Public Works Officer, NASP

FIRST VICE PRESIDENT

Mr. Daryll Long, CH2M HILL/VT
Griffin, JV (Programs)

SECOND VICE PRESIDENT

Mr. Bill Klepac, Public Works, NASP
(Membership)

THIRD VICE PRESIDENT

Jason Lashley
HDR Engineering (Scholarship)

FOURTH VICE PRESIDENT

ENS Jeremy Theis, CEC, USN,
OICC Ivan
(Young Members)

SECRETARY

ENS Vincenzo (Jimmy) Ciaravino,
CEC, USN, OICC Ivan

TREASURER

LTJG David McCoy, CEC, USN,
ROICC Pensacola

WEBMASTER

Mr. Charlie Bailey
NETC

SWE LIASON

Mrs. Christine Buziak
ROICC

DIRECTORS

- CAPT Gerald Manley, CEC, USN,
OICC Ivan
- Mr. Bob Schenk,
CH2M HILL/VT Griffin, JV
- Mr. Pete Dohms,
Gallet and Associates
- Ms. Christy Draper,
Severn Trent Laboratories
- Mr. Joe Riccio, CAPT, CEC,
USN (ret)

The SAME General Membership & Business Meeting will be Thursday 20 April inside the Lighthouse Point Restaurant from 1130-1300. The guest speaker will be Mr. W. Jeff Lillycrop. He is the Director of the Joint Airborne Lidar Bathymetry Technical Center of Expertise (JALBTCX).

Sustaining Members

HDR Engineering, Inc.	CH2M HILL/VT Griffin
Heffernan Holland Morgan Architecture	EnSafe, Inc.
Maintenance Management Solutions, Inc.	Gulf Power Company
Critical Path Mechanics	Whitesell-Green, Inc.
MACTEC Engineering and Consulting	Hatch Mott MacDonald
Fabre Engineering, Inc.	Bullock-Tice Associates
Irby Engineering	



TREASURER'S REPORT

\$44,534.23

PENSACOLA CHAPTER NOTES:

Associates and Friends of SAME and the Greater Pensacola CEC Wardroom:

Please accept this invitation to our upcoming SAME luncheon.

1. Please join the Society of American Military Engineers for our next luncheon, which will be held at the Lighthouse Point Restaurant on Thursday 20 April from 1130-1300. The guest speaker will be Mr. Jeff Lillycrop. Mr. W. Jeff Lillycrop is the Director of the Joint Airborne Lidar Bathymetry Technical Center of Expertise (JALBTCX), a partnership between the U.S. Army Corps of Engineers, the U.S. Naval Meteorology and Oceanography Command, and the National Ocean Service. The Joint Center operates the CHARTS airborne lidar system and performs R&D to expand the capabilities of airborne coastal mapping and charting to support Department of Defense and Department of Commerce requirements. Jeff has worked for the Corps since 1983 and holds a Masters of Science in coastal and oceanographic engineering from the University of Florida and has published over 50 technical papers related to airborne lidar, surveying and mapping, sediment management, and other topics related to coastal engineering.

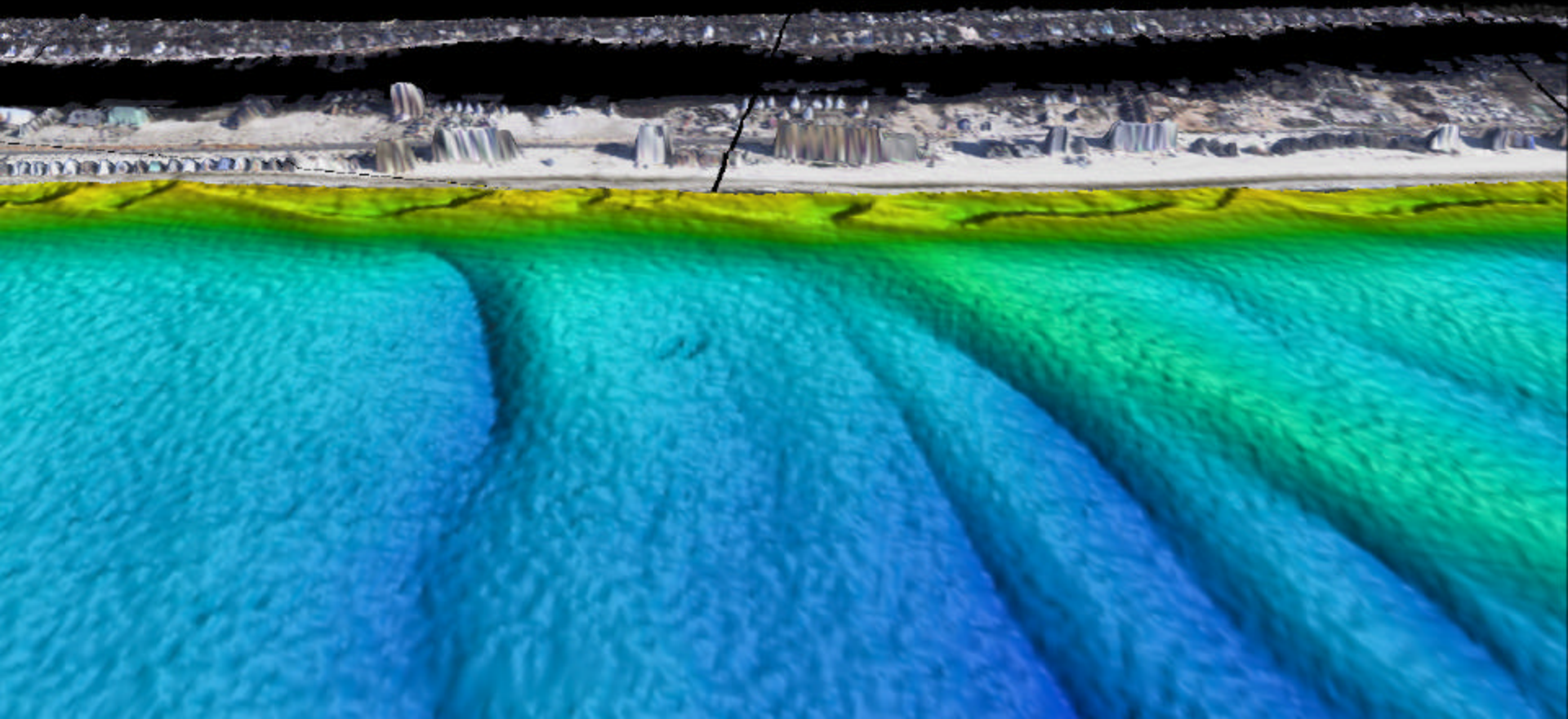
2. Some topics of discussion during the last board meeting were:

- Promoting the SAME website and improving the site by updating scholarship info.
- Establishing a process to award continuing education credits for attending SAME meetings.
- Reviving sustained participation in the meetings and encouraging new member growth.
- Adding a column to the newsletter showing future meeting topics and potential field trips.

VISIT OUR POST WEBSITE AT: <http://posts.same.org/pensacola/>

Proposed 2006 SAME Schedule

Board Meeting	General Membership Meeting
7-Apr	20-Apr
5-May	18-May
2-Jun	15-Jun
7-Jul	20-Jul
4-Aug	17-Aug
8-Sep	21-Sep
6-Oct	19-Oct
3-Nov	16-Nov
1-Dec	14-Dec



Airborne coastal mapping & charting using laser technology has proven a very useful tool for measuring and monitoring the impacts of hurricanes to the Florida Panhandle. Through a joint Navy, Army and NOAA organization located at the Stennis, MS, international airport, several airborne laser surveys have been conducted in response to the storms along the Pensacola area. The surveys include topographic land elevations, including buildings and vegetation; bathymetric water depths; and imagery. The above picture is along Pensacola Beach, created from data collected prior to Hurricane Ivan with imagery draped over the topographic elevations and the color coded coastal water depths showing interesting sand bars and underwater features. In addition to these surveys, surveys by USGS and NASA have been combined to study the physical, environmental and economic impacts of hurricanes Ivan and Katrina to the northern Gulf of Mexico. Mr. Jeff Lillycrop will explain the laser technology, the joint organization, and show data from the 2004 & 2005 hurricanes that impacted Pensacola.